

The Revolutionary Simex Twin Header Rock Grinders/Rotary Cutters

When conventional digging systems are too weak and percussion tools have little effect, miners are increasingly turning to Simex Twin Header Rock Grinders/Rotary Cutters.

The Simex range has been paving the way for over 30 years. With continuous investments in technology and production facilities, Simex products are designed to allow users to work better, simply, quickly and above all, safely.

Ideal for trench work in hard and compacted ground, for concrete and rock wall profiling, dredging, demolition and quarry work, the Simex Twin Header Rock Grinders/Rotary Cutters are the right tool when standard excavation systems won't do the job.

Particularly suited to mining and tunnelling applications, the Rotary Cutters come with models to suit 2.5 - 70 metric tonne excavators and can be used in quarries with a variety of rock, including limestone, gypsum or schist with rocks having a hardness of up to 85 mPa.

Low noise and vibration level
Simex Rotary Cutters are ideal for vibration sensitive works as they produce very little vibration compared to an impact tool i.e. rockbreaker.

With different cutter drum options and tools with different features, Rotary Cutters are suitable a range of job types and various materials requiring milling.

The patented design of direct drive, high displacement hydraulic piston motor ensures high performance and low speed/high torque without a need of reduction gear box.

Importantly, the special design of the Simex Cutter Head does not cause damage or disturbance to the surroundings so it can be put to work near populated areas, hospitals, schools, bridges and infrastructure.

It is especially recommended for finishing operations, where requirements call for high precision, minimum intrusion and an optimum aesthetic result.

Feedback received from the operators is that balance and controllability of Simex Rotary Cutters make the job easier for them and the symmetric housing of the unit enables it to cut into corners very efficiently.

Tunnelling
For the mining sector, the accuracy and precision in the work area, as well as the low vibrations, make the Simex Rotary cutters excellent attachments for tunnelling work, as an alternative to conventional systems that are often too invasive and more expensive.

The large cutting surface of the rotary cutters is particularly suitable for profiling vertical and inclined walls, as is the case for tunnel vaults. The selective removal of deteriorated concrete for later remediation is one of the fundamental activities in the

maintenance of tunnels, to ensure proper viability of high-traffic roads.

TF Double Drumcutter - Designed For Maximum Performance
The frame's particular shape allows reducing the distance between the drums improving the total working width. Furthermore, milled material is discharged from the trench without getting stuck in the structure due to perfect symmetry of the frame, which also allows hoses to be hooked up at sides and front.

Replaceable anti-wear plates. In addition, the mechanical gaskets fitted on the drums ensure maximum resistance to dust and any external agent, allowing the TF double drumcutter to work completely submerged into the ground or water up to a maximum depth of 30 metres.

Drum cutter can be rotated 90° thanks to square holes of coupling plate, thus making the equipment even more productive and versatile in regards to the application field.

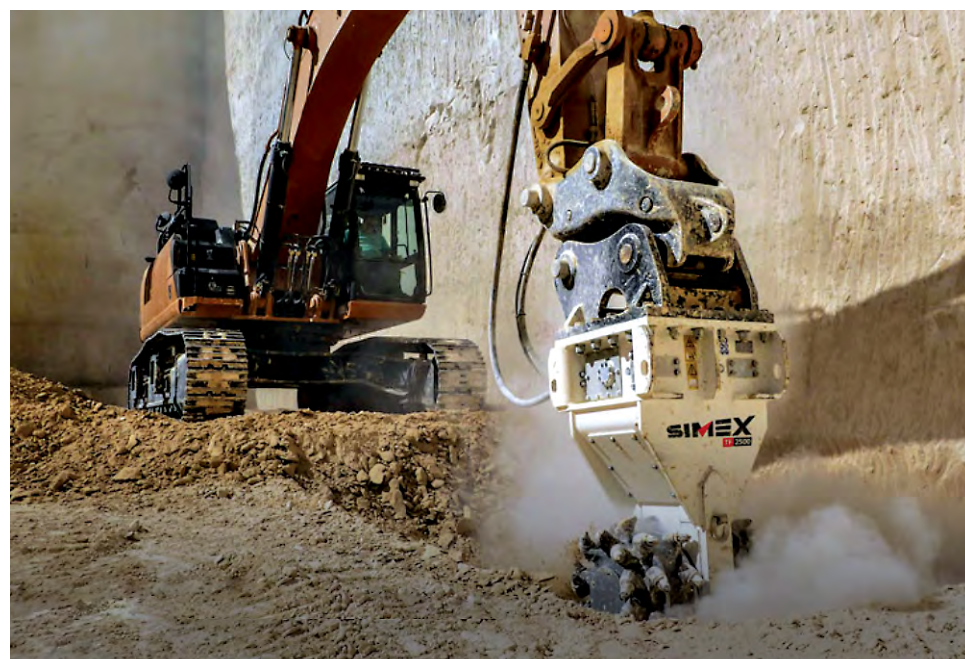
Maximum Protection And Zero Routine Maintenance
The Filter on feed line and filter on drainage line are both integrated, protecting the hydraulic system from any external impurities, which can damage or reduce the performance of both the excavator and the equipment.

Additional protection from pressure peaks is provided on drainage line by an accumulator and a fuse and on feed line by a flow limiting valve. The latter also allows easy coupling with various excavator models and sizes, facilitating installation and calibration operations.

The direct drive motor does not require lubrication or other types of routine maintenance.

Highlights of the Simex Twin Header Rock Grinders/Rotary Cutters range include:

- The twin header rotary cutter uses special patented technology with high torque that can bore through the toughest of material - dislodging and extracting material in a variety of applications.
- An integrated high displacement hydraulic piston motor in the rotary cutter ensures high torque and high performance is consistently maintained during its deployment.
- A filter on the feed line of the rotary cutter prevents impurities from entering the machine's motor system.
- Gaskets fitted to the rotary cutter's drums guard against dust while the machine is working in the ground.
- Double support bearings for each of the drums ensure a longer service life for the machine, as its shaft system transmits only motion and bears no load.
- Replaceable anti-wear plates are low cost in terms of the machine's maintenance.
- Hydraulic system fitted with accumulators that act to protect the



unit from hydraulic pressures while the unit is in operation.

- Noise emissions are quite low compared to other mechanical machines and other methods of extraction.
- High performance with no loss of power
- Direct drive: direct drive hydraulic piston motor, which directly delivers power to the drums without mechanical transmission components, thus guaranteeing high torque and high performance. Shaft transmits motion only and bears no load thanks to double support bearings for each drum.
- SIMEX twin headers can be mounted on carriers from 2.5 tonnes up to 70 tonnes, with maximum cutting force for the rotary cutting machine varying from 15.1 - 128 kN, depending on the model.
- Twin Headers can be used in quarries with a variety of rock, including limestone, gypsum or schist with rocks having a hardness of up to 85 mPa.

Try Them Now In Australia
Simex products have been manufactured in Italy for over 30 years. They are imported to Australia by Queensland-based RD Williams and distributed by the authorised dealer network:

QLD Rockbreakers in QLD and NT:
(07) 3452 0772,
rdw.com.au/qlld-rock-breakers

GroundTec in NSW:
(02) 9642 2030,
groundtec.com.au

Walkers Hammers in VIC, SA and TAS:
(03) 9315 3788,
walkershammers.com.au

Total Rockbreaking Solutions in WA:
1300 921 498,
totalrockbreaking.com.au
AMR

SIMEX Rock Grinders ADVANTAGE:

- Precise cut
- Low vibrations
- Quiet operation
- High torque
- Dust proof
- Fast set-up
- 360° hydraulic rotation (optional)
- Replaceable anti-wear plates
- Drums and teeth options for a variety of applications

Tunneling, quarrying, profiling rock and concrete walls, trenching demolition, dredging, finishing operations and underwater works



Maximum cutting force from 15.1 to 128 kN, depending on the model.

SIMEX

Authorised Dealer
Network in Australia

NSW

Groundtec Equipment
(02) 9642 2030
groundtec.com.au

VIC / SA / TAS

Walkers Hammers
(03) 9315 3788
walkershammers.com.au

QLD / NT

QLD Rock Breakers
(07) 3715 0800
rdw.com.au

WA

Total Rockbreaking Solutions
1300 921 498
totalrockbreaking.com.au