



**SIMEX**  
HEAVY MADE EASY

RANGE

**ST**

## ASPHALT FLOAT

ST 200

- Simple to use
- Easy to clean
- Lightweight for transport
- Reduces working times
- Clean result, safe working

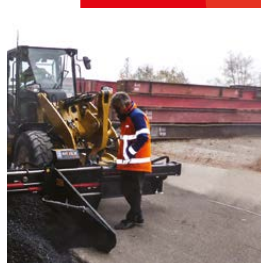
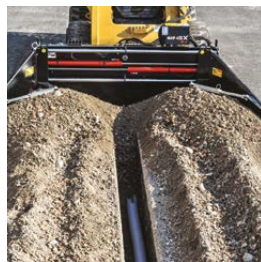


# ASPHALT FLOAT

ST 200



ST asphalt floats are designed to lay asphalt or waste material to fill set-section trenches, create sidewalks or widen existing roadways. The lateral slides take the existing surface as reference, whereas the thickness of the laid asphalt can be adjusted. The floating transverse tilt can be locked in case a slide doesn't touch the ground. They can lay asphalt on sidewalks or widen the road surface without the prime mover passing over the spread material since they can work totally offset the machine. (except ST 160B).



## ADVANTAGES

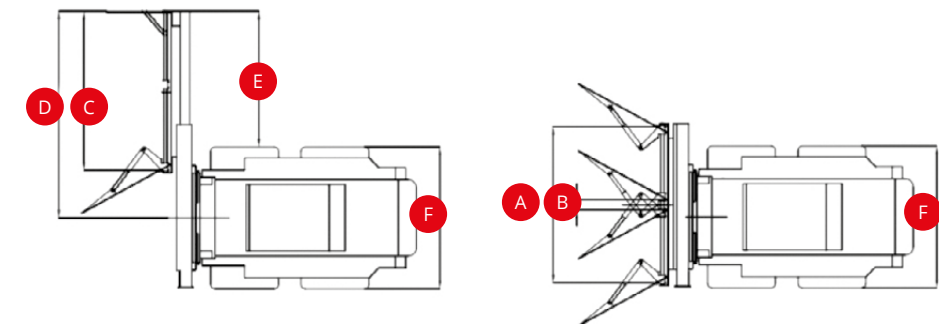
- Simple to use
- Easy to clean
- Lightweight for transport
- Reduces working times
- Clean result, safe working



TECHNICAL DATA		ST 200
Asphalt laying width regulation		Hydraulic
Asphalt thickness regulation (independent RH-LH)		Mechanical
Asphalt thickness	mm inch	0 - 100 0 - 4
Transverse tilt		5°
Tilt locking device		si
Side shift		Hydraulic
Average working speed	m/min inch/min	50 - 120 200 - 470
Operating weight (1)	kg lbs	675 1485
Required oil flow	l/min gpm	45 12
Oil pressure	BAR psi	200 2900

(1) User is responsible for ensuring that the characteristics of the prime mover suit the weight and specifications of the attachment  
(\*) Optional

Simex does not accept responsibility or liability for the information provided. Technical modifications may vary without prior notice.



REF.		ST 200
A	mm inch	1900
B	mm inch	125
C	mm inch	1960
D	mm inch	2550
E	mm inch	1675
F	mm inch	1750