

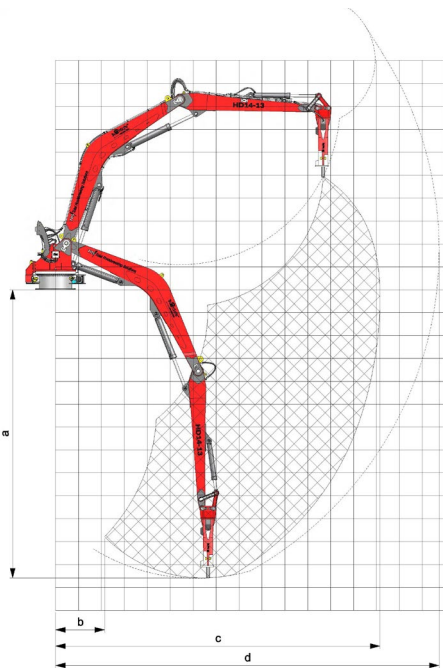
## TRS HD BOOMSAFE® BOOM SYSTEMS



TRS HEAVY DUTY BOOM SYSTEMS | BOOMSAFE® SMART BOOM TECHNOLOGY

## for large, high-duty mining operations

With over 20 years of experience designing rockbreaking boom systems, TRS engineers have worked closely with customers and mine site personnel in some of WA's harshest mining operations to address reliability and availability concerns in high duty, hardworking applications.



Re-designed from the ground up, TRS 'HD Series' rock breakers represent the first significant development in fixed plant rock-breaking boom systems in over a decade.

Incorporating our industry leading BoomSafe® control and automation system, TRS booms can be supplied with features such as collision avoidance and automated movements, with options for remote multi-user operation available.

TRS Rockbreaking Boom Systems are high-quality, Australian engineered products which are specifically designed to operate faster and with longer reach and

larger rockbreakers than previous generations of boom systems.

To meet the needs of modern mines, TRS BoomSafe® Booms have key features that set them apart from the rest in terms of performance, reliability and ease of maintenance, all of which reduce downtime and costs.

7 models from 22.5 to 25.8 tonne and reaches up to 17.8 metres

### PERFORMANCE



Features include increased movement speeds, longer reach, TRS 'Zero-Tension' hose support, large diameter pivot pins and the industry's most reliable control and automation system – TRS BoomSafe®.

### SAFETY



Energy absorbing mechanical stops are fitted to the slew as standard, load holding valves are built into ALL cylinder barrels to protect from external damage and a safety-rated, fail safe, secondary slew sensor is fitted in addition to the primary left and right slew sensors.

### EASY MAINTENANCE



Parallel pins with built-in extraction facilities, standardised components across the HD range and an extensive library of proven stands / frames for hammer and tool changing are just some of the ways TRS is keeping maintenance costs and downtime to a minimum.

## BOOM CONTROL SYSTEMS



MINING BOOM SYSTEM SPECIALISTS | BOOMSAFE® SMART BOOM TECHNOLOGY

### BoomSafe® smart boom technology

- automation
- collision prevention
- remote operation

### increase safety

Safety is a primary objective for all modern mines. Increasingly, mine operators are turning to technology and remote operation to reduce the exposure risk for operators and nearby personnel.

Developed specifically for hydraulic boom systems BoomSafe® combines automated movement sequences and collision prevention with true remote multi-operation capability for your rockbreaking boom systems.

### reduce downtime

Featuring easy onsite customisation and maintenance, BoomSafe® will help you reduce downtime as movement sequences can be configured and modified by site-based maintenance staff using the user-friendly touchscreen.

configured and modified by site-based maintenance staff using the user-friendly touchscreen.

Operators can execute the automated movements with a single button press.

### prevent collision

At the heart of BoomSafe® is an automated Collision Prevention System allowing your maintenance staff to set up a safe work area where the boom is allowed to operate.

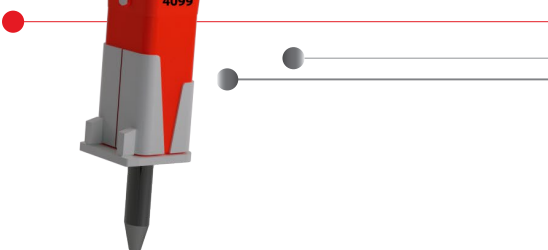
All commands from the local Radio Control or Remote Operation System are supervised by BoomSafe® to avoid damage to the boom and surrounding infrastructure and prevent movements which would result in the boom moving outside the safe work area.

### increase speed

Automated movements can be executed with a single button press, improving speed and precision.

### automate movements

Automated Movement Commands such as 'Park', 'Deploy', 'Tool Replacement Position', 'Rockbreaker Change Position' or any other common or difficult movement sequences can be



**BoomSafe®**  
PROTECTED  
smart boom technology





MINING BOOM SYSTEM SPECIALISTS | BOOMSAFE® SMART BOOM TECHNOLOGY

## remote operation

Remotely control all of your rockbreaking boom systems from a single workstation. For larger sites, multiple workstations can share control of a group of booms on a first-come, first-served basis.

## customise onsite

Your site maintenance staff can set up and modify BoomSafe® movement sequences and adjust the allowed area of operation when needed.

BoomSafe® can also be integrated with other sensor systems on site, such as perimeter safety gates.

## simple maintenance

If maintenance is required, all BoomSafe® components can be replaced in minutes using only hand tools. Sensors are mounted separately to the boom hydraulics and are easily accessible.

## factory-fit or retro-fit

BoomSafe is available factory fitted on new Boom Systems or can be retrofitted to any brand of boom without making changes to hydraulic components.

## ABOUT US

Total Rockbreaking Solutions (TRS) is a wholly Western Australian owned company, focused entirely on the design, sales and service of hard rock mining boom systems, hydraulic power units and a large range of specialist hydraulic attachments for the mining, construction and recycling industries.

Our highly experienced in-house engineering and project management team specialise in the mechanical and hydraulic design of Australian made heavy duty fixed boom systems and high specification hydraulic power units ideal for large scale mining operations.

### ADVICE AND SUPPORT



With extensive industry-specific knowledge and experience we provide you with service, advice and solutions that meet the specific needs of your application.

### MAINTENANCE



Our technicians are dedicated to maintaining your equipment in peak condition and are happy to provide you with professional technical advice when needed.

### INCREASED UPTIME



Getting the work done reliably and on time is essential and therefore we offer only industry leading products and genuine tools, parts, consumables and accessories that are readily available in our warehouse.